

MONTHLY MEMBERSHIP PROGRESS REPORT

LOCATION INDIA

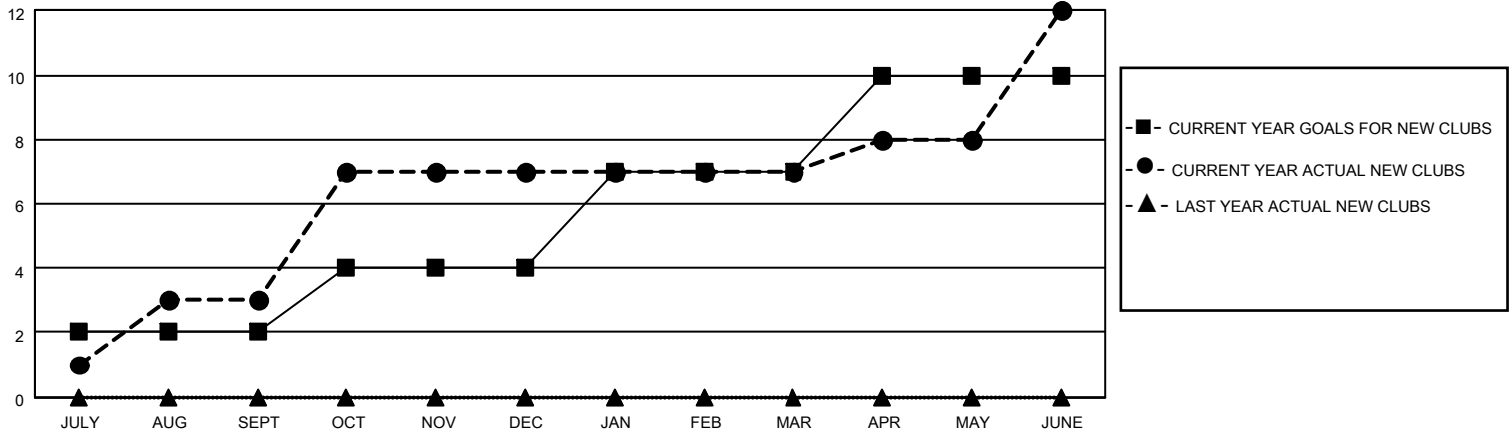
District 324 D

Results as of: 6/30/2022

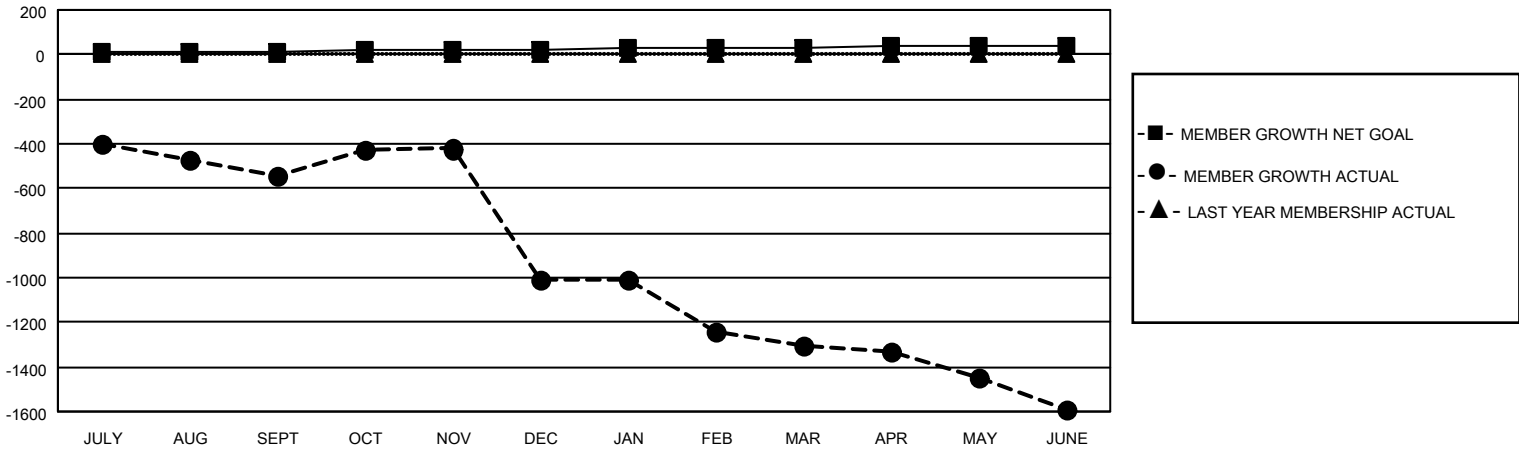
Clubs			
RESULTS FOR 2021-2022			
QUARTER	NEW CLUB GOAL	NEW CLUBS	DROPPED CLUBS
JULY/AUG/SEPT	2	3	19
OCT/NOV/DEC	2	4	3
JAN/FEB/MAR	3	0	1
APR/MAY/JUNE	3	5	20

Members			
RESULTS FOR 2021-2022			
QUARTER	MEMBER GROWTH NET GOAL	MEMBER GROWTH ACTUAL	DROPPED MEMBERS ACTUAL (including transfers)
JULY/AUG/SEPT	10	359	731
OCT/NOV/DEC	10	307	598
JAN/FEB/MAR	10	262	356
APR/MAY/JUNE	10	290	523

GOALS AND ACTUAL NEW CLUBS CUMULATIVE



GOALS AND ACTUAL MEMBERS CUMULATIVE



DROPPED CLUBS: 43

58 CLUBS OF 128 ADDED 1 OR MORE NEW MEMBERS

GENDER DISTRIBUTION

MALE	1,606 (77.17%)
FEMALE	475 (22.83%)
NON BINARY	0 (0.00%)
PREFER NOT TO ANSWER	0 (0.00%)

DROPPED MEMBERS

[CLICK HERE FOR CUMULATIVE MEMBERSHIP DATA](#)

DECEASED	10
CLUB CANCELLED	643
OTHER	1,555
TOTAL	2,208

TOTAL FAMILY UNIT MEMBERS 1,218

FAMILY MEMBERS PAYING HALF DUES 877